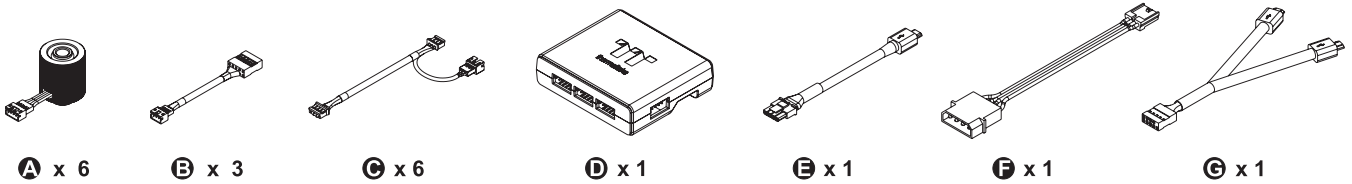


This product is intended for installation only by expert users. Please consult with a qualified technician for installation. Improper installation may result in damage to your equipment.

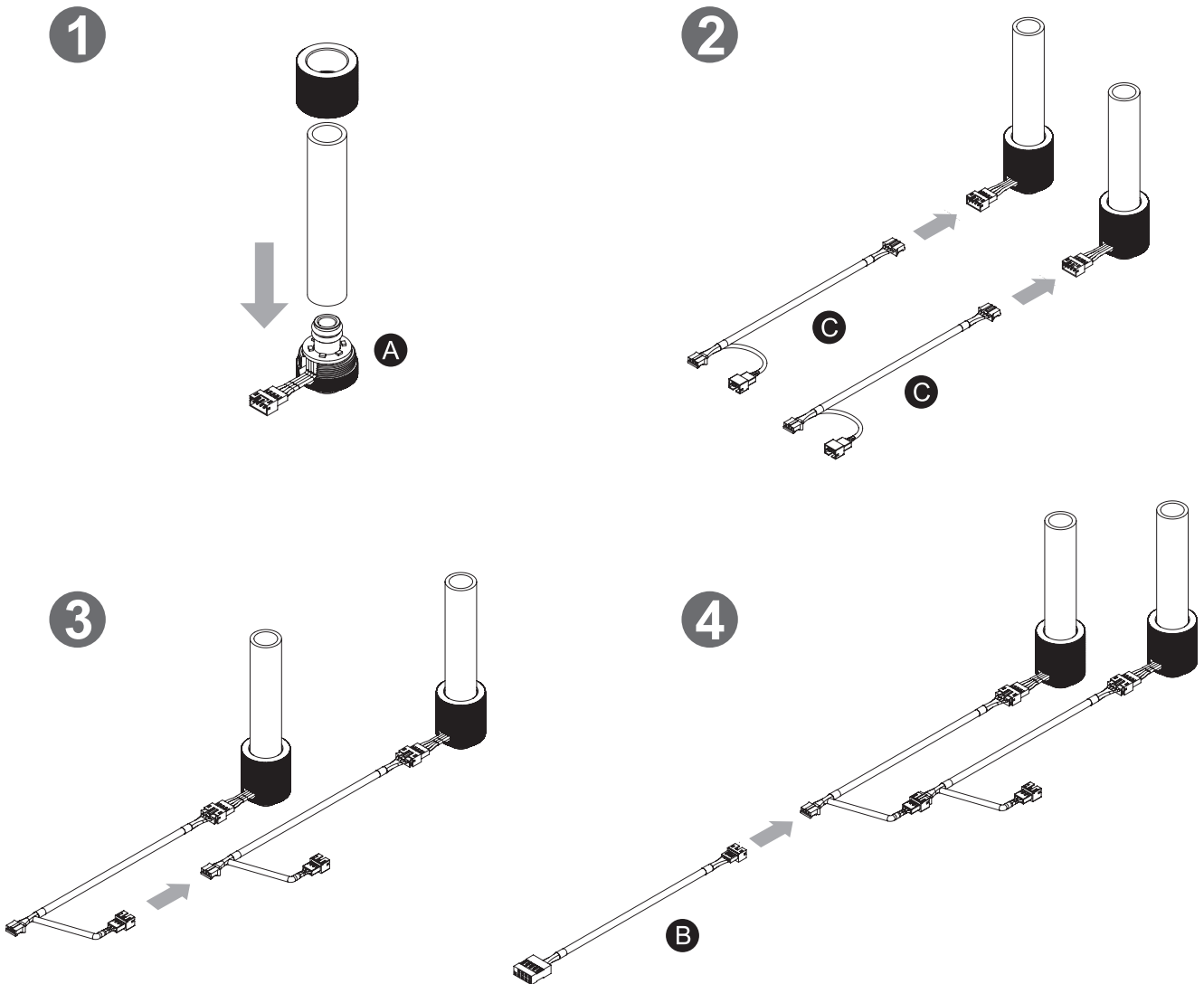
Before you start using this product please follow these basic guidelines:

1. Please carefully read through the instruction manual before beginning the installation process.
2. It is strongly recommended to use market proven pre-mix coolant, such as Thermaltake Coolant 1000.

Parts List



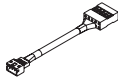
Installation Guide



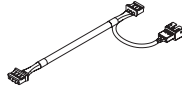
Parts List



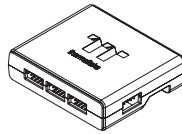
A x 6



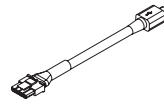
B x 3



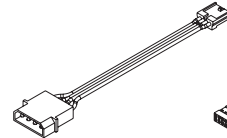
C x 6



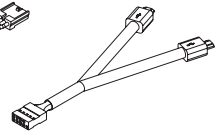
D x 1



E x 1



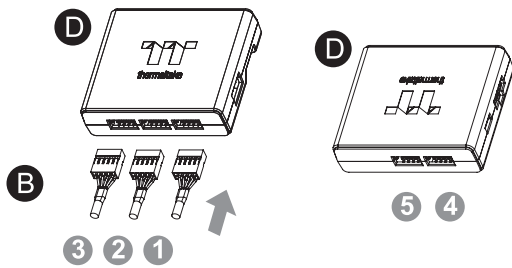
F x 1



G x 1

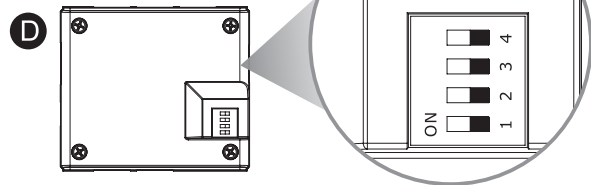
Installation Guide

5



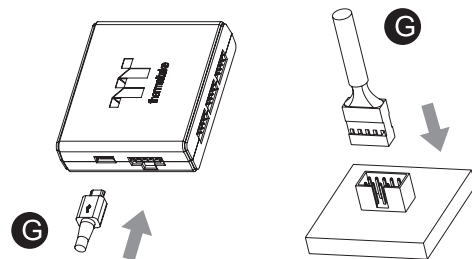
Connect the fitting onto the controller.
(one port support two fitting)

6



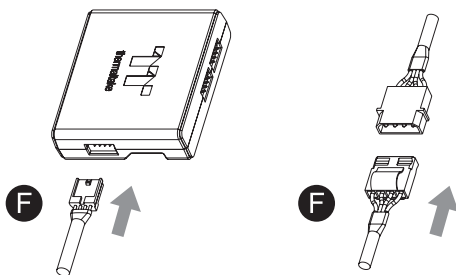
Set the DIP switch on the back side of the controller to assign the number of the controller

7



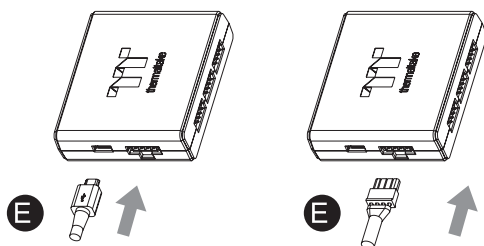
Connect the controller cable onto the mainboard (USB 2.0 9 pin)
and controller.

8



Connect the power cable to the 4pin Molex connector and controller.

9

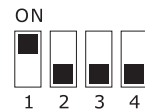


If you want to connect two or more connectors, you can use the bridge
cable to connect the controllers.

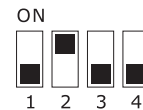
NO.1



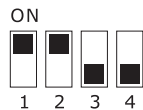
NO.2



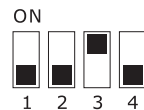
NO.3



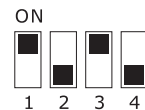
NO.4



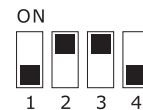
NO.5



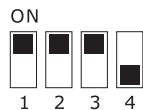
NO.6



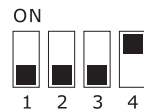
NO.7



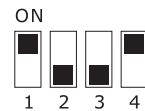
NO.8



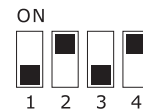
NO.9



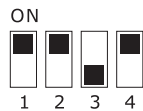
NO.10



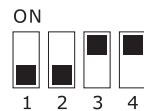
NO.11



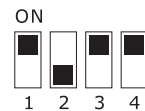
NO.12



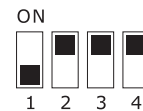
NO.13



NO.14



NO.15



NO.16

